

Rates

Table with columns: Instrumento, TNA, and dates. Includes Call 1d, Call 7d, Caucion 7d, etc.

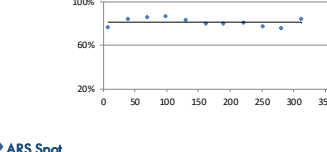
BCRA\$3500 USD

Table with columns: Days, Change, Annualized. Shows data for 8d, 31d, 62d, 92d, 181d, 365d.

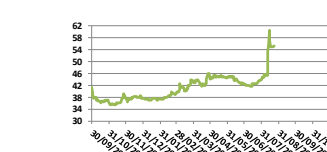
Rofex - ARS/USD Futures

Table with columns: Futures, Maturity, Days, USD, Rates, -d1, Ch, Op.1. Lists various futures contracts.

ARS Spot



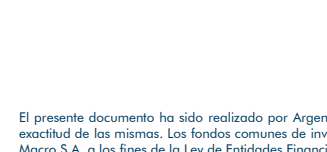
ARS Spot



ARS Spot



ARS Spot



Bonds

Table with columns: Bond, Code, Amt Out, Coupon, Price, YTM, MD, Maturity. Lists various bond instruments.

Sovereign and corporate ARS Floating Money Policy

Table with columns: Bond, Code, Amt Out, Coupon, Price, YTM, MD, Maturity.

Sovereign ARS Floating Badlar

Table with columns: Bond, Code, Amt Out, Coupon, Price, YTM, MD, Maturity.

Sub-Sovereign ARS Floating Badlar

Table with columns: Bond, Code, Amt Out, Coupon, Price, YTM, MD, Maturity.

Bond

Table with columns: Bond, Code, Amt Out, Coupon, Price, YTM, MD, Maturity.

Bonds

Table with columns: Bond, Code, Amt Out, Coupon, Price, TNA, MD, Maturity.

Bonds

Table with columns: Bond, Code, Amt Out, Coupon, Price, TNA 365, MD, Maturity.

Bonds

Table with columns: Bond, Code, Amt Out, Coupon, Price, TNA 360, MD, Maturity.

Bonds

Table with columns: Bond, Code, Amt Out, Coupon, Price, TNA, MD, Maturity.

Bonds

Table with columns: Bond, Code, Amt Out, Coupon, Price, TNA, MD, Maturity.

Bonds

Table with columns: Bond, Code, Amt Out, Coupon, Price, TNA, MD, Maturity.

Bonds

Table with columns: Bond, Code, Amt Out, Coupon, Price, TNA, MD, Maturity.

Bonds

Table with columns: Bond, Code, Amt Out, Coupon, Price, TNA, MD, Maturity.

Bonds

Table with columns: Bond, Code, Amt Out, Coupon, Price, TNA, MD, Maturity.

Bonds

Table with columns: Bond, Code, Amt Out, Coupon, Price, TNA, MD, Maturity.

Bonds

Table with columns: Bond, Code, Amt Out, Coupon, Price, TNA, MD, Maturity.

Spread 106,8%

Spread

Spread

Spread

Spread

Spread

Spread

Spread

Spread

Spread

Spread

Spread

Spread

Spread

Spread

Spread

Spread

Spread

Spread

Spread

Spread

Spread

Spread

Spread

Spread

Spread

Spread

Spread

Spread

Spread

Spread

Spread

Bonds

Table with columns: Bond, Code, Amt Out, Coupon, Price, YTM, MD, Maturity.

Sovereign USD

Table with columns: Bond, Code, Amt Out, Coupon, Price, YTM, MD, Maturity.

Sub-Sovereign USD

Table with columns: Bond, Code, Amt Out, Coupon, Price, YTM, MD, Maturity.

Corporate USD

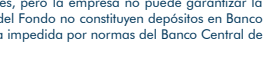
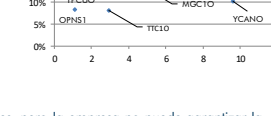
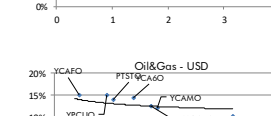
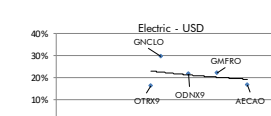
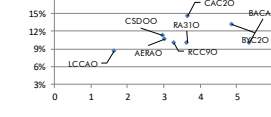
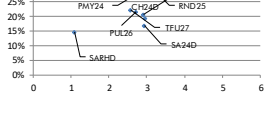
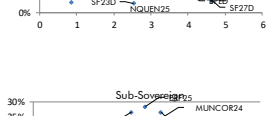
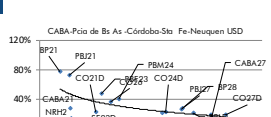
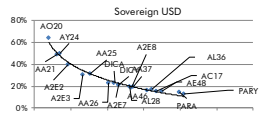
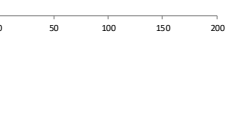
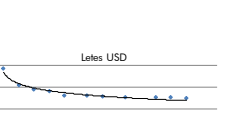
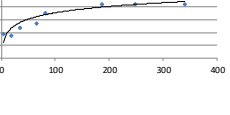
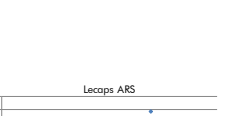
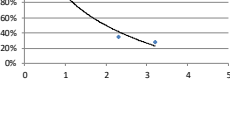
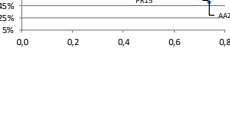
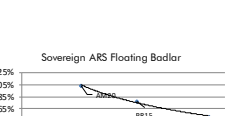
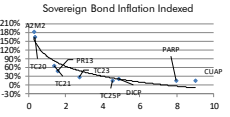
Table with columns: Bond, Code, Amt Out, Coupon, Price, YTM, MD, Maturity.

Corporate USD

Table with columns: Bond, Code, Amt Out, Coupon, Price, YTM, MD, Maturity.

Corporate USD

Table with columns: Bond, Code, Amt Out, Coupon, Price, YTM, MD, Maturity.



El presente documento ha sido realizado por Argenfundis S.A. con fines estrictamente informativos. No debe ser tomado como una invitación a suscribir cupotarpes ni como una oferta de compra o venta de valores. El documento se ha realizado con fuentes de información consideradas confiables, pero la empresa no puede garantizar la exactitud de las mismas. Los fondos comunes de inversión están sometidos a variaciones en los precios de los activos que pueden afectar su rendimiento. Los rendimientos pasados de los fondos comunes de inversión no garantizan el desempeño futuro de los mismos. Las inversiones en cupotarpes del Fondo no constituyen depósitos en Banco Macro S.A. a los fines de la Ley de Entidades Financieras ni cuentan con ninguna de las garantías que tales depósitos a la vista o a plazo pueden gozar de acuerdo con la legislación y reglamentación aplicables en materia de depósitos en entidades financieras. Asimismo, Banco Macro S.A. se encuentra impedida por normas del Banco Central de la República Argentina de asumir, tácita o expresamente, compromiso alguno en cuanto al mantenimiento, en cualquier momento, del valor del capital invertido, al rendimiento, al valor del rescate de la cuota partes o al otorgamiento de liquidez a tal fin. Gráficos de Elaboración propia.